

KINDER MORGAN

ENERGY PARTNERS, L.P.



**Pipeline Awareness
is a Team Effort**

**El Conocimiento de la tubería
es un Esfuerzo del Equipo**



YOUR PARTNER IN PIPELINE SAFETY

As one of the thousands of people who live or work near pipelines, you can help keep it safe and reliable. This brochure will help you:

- know how to notify us with your intention to dig
- identify our pipelines
- recognize a leak
- take appropriate steps if you notice a leak
- immediately report a leak

Kinder Morgan cares about your safety. We design, install, test, operate, and maintain our pipelines to meet or exceed regulatory standards. Our employees are thoroughly trained to operate and maintain the system safely. We want you to be aware of our pipelines. We ask for your help in preventing accidental damage to pipelines. Kinder Morgan supports the Nation's Homeland Security efforts and Kinder Morgan encourages you to immediately notify and report any suspicious persons and/or activities near the pipeline to your local law enforcement authorities by calling 911.

HOW TO WORK AROUND OUR PIPELINE. CALL BEFORE YOU DIG - IT'S THE LAW !

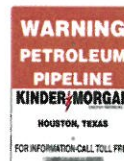
We need your help in preventing pipeline emergencies. The number one cause of pipeline leaks is damage from earth-moving and construction equipment and tools owned by parties other than the pipeline company. If you plan to dig or do any type of excavation or construction work, call your state underground utilities locating service or "One Call Center" (listed in this brochure). A Kinder Morgan representative will locate and mark the underground lines at no cost to you. Call at least 48 hours (excluding weekends and holidays) before you:

- Excavate
- Grade
- Auger
- Bore
- Tunnel
- Dredge
- Install water lines, sewer lines, septic systems, or drains
- Install telephone, TV or power cables
- Install drain tile
- Cut or deepen ditches
- Blast for clearing
- Dig postholes
- Repair or rebuild roads or driveways
- Plant or remove trees or shrubs
- Build homes or additions
- Install swimming pools
- Remove above ground structures

Even if you haven't provided advanced notification, please contact us immediately if you dig and hit or touch a pipeline – even if you should cause what seems to be only minor damage to the pipeline – contact us immediately. A gouge, dent, crease, or scrape may cause a safety problem in the future. Should you see any ground movement, wash-outs, or soil erosion on, in or along the pipeline Right Of Way, please notify Kinder Morgan with the physical location of the area including State, County, Township and Range (if known) or closest physical address.

HOW TO IDENTIFY WHERE THE PIPELINE IS LOCATED

Since pipelines are buried underground, line markers are used to indicate the approximate – not exact – location of the pipeline. Line markers can be found where the pipeline intersects a street, highway, or railroad. However, they cannot be relied upon to indicate the exact position of the pipeline. The pipeline may not follow a straight course between markers, which provide no information on the depth or number of pipelines in the vicinity. Don't try to guess the pipeline's location or route by the marker's placement. Call your state "One Call Center" listed in this brochure.



WHAT IS A PIPELINE EMERGENCY?

- A weakened or damaged pipeline.
- Fire or explosion near or directly involving a pipeline or pipeline facility.
- A natural disaster affecting the pipeline, such as an earthquake, flood or soil erosion.
- A leaking pipeline.

HOW TO RECOGNIZE A PIPELINE LEAK WHEN NEAR A PIPELINE RIGHT OF WAY



- LOOK FOR:** Fire or explosion near pipeline
A white cloud, fog or ice
Dying plants amid healthy ones
Unusual blowing of dirt or dust
Persistent bubbles in water
Pool of liquids, possibly bubbling
- LISTEN FOR:** Hissing or roaring sound
- SMELL FOR:** An unusual, petroleum-like odor

WHAT TO DO IN A PIPELINE EMERGENCY

- Immediately leave the area – on foot – in an upwind direction.
- Avoid making contact with escaping liquids or vapors as potential hazards may include eye, skin and respiratory irritation and the product may be highly flammable.
- Avoid potential ignition sources.
- Abandon all equipment being used in the area.
- **DO NOT** drive into an area in which you encounter a leak or vapor cloud.
- **DO NOT** light a match, start an engine or automobile, use a telephone, or switch on/off an electric light or appliance.
- Warn others to stay away from the area.
- **DO NOT** try to operate any pipeline valves yourself.
- **DO NOT** use a cell phone while near the suspected emergency area.
- From a distant phone, call Kinder Morgan's Emergency phone number listed on the back of this brochure and call 911 or your local fire, police, or sheriff's office.

EMERGENCY ACTION PROCEDURES FOR PUBLIC SAFETY OFFICIALS

If you are a public safety official, use all applicable training you have received in taking the steps necessary to safeguard the public in the event of a pipeline emergency. The following are some guidelines to keep in mind:

- Secure the area around the leak to a safe distance. This could include evacuating people from homes, businesses, schools and other locations, erecting barricades, controlling access to the emergency site, and similar precautions.
- If the pipeline leak is not burning, take steps to prevent ignition. This could include prohibiting smoking, rerouting traffic, and shutting off the electricity and residential gas supply.
- If the pipeline leak is burning, take steps to prevent secondary fires, but **DO NOT** attempt to extinguish a pipeline fire unless asked to do so by pipeline company personnel.
- Contact the pipeline company as quickly as possible. Pipeline marker signs show the pipeline company's name and emergency telephone number.

Please visit our website for further information regarding Public Safety Officials.

DAMAGE PREVENTION

Whether you are a private homeowner installing a mailbox or a professional contractor digging up a city street, you are required by law to notify your local one-call utility notification center 48 to 72 hours prior to digging. This is very important.

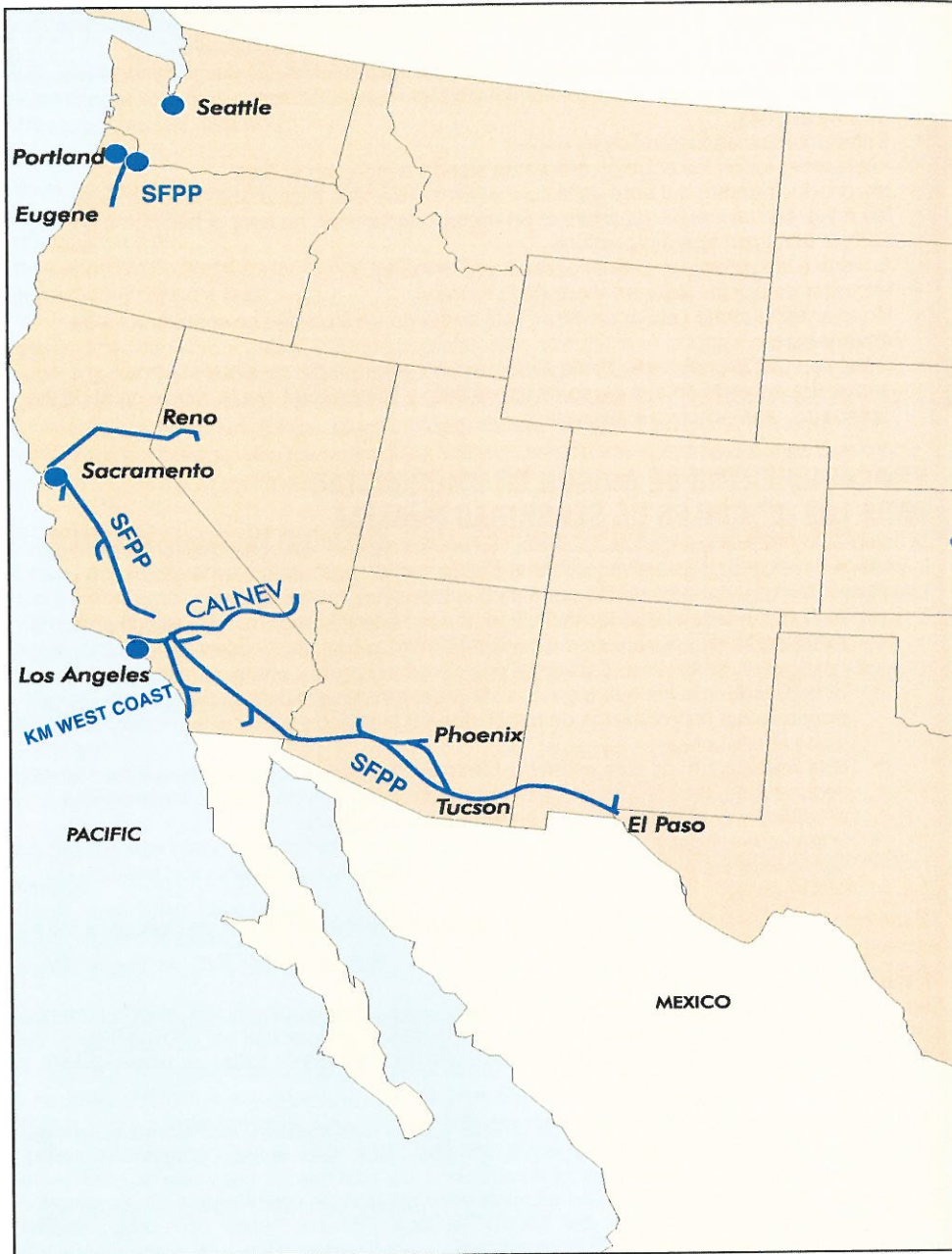
Careless digging poses a threat to underground facilities and to people. It is estimated that there are hundreds of thousands of incidents each year in which underground facilities are damaged during excavation, with many of these resulting in injuries and fatalities. Most areas have established one-call centers for you to call before digging. The one-call center process, along with other damage prevention initiatives, has significantly increased excavation safety. However, accidents still occur, and a major reason is that some people who dig still do not make the necessary call even though it's the Law!

To help address this problem in the United States, Congress mandated in the Pipeline Safety Improvement Act of 2002 the establishment of a national, call-before-you-dig, three-digit telephone number. In accordance with that mandate, on March 10, 2005, the Federal Communications Commission (FCC) established and adopted the number 8-1-1 as the national call-before-you-dig number. The Common Ground Alliance has created a national public awareness campaign to promote the use of 811. Many states and telecommunication service providers are moving forward with the implementation of this important service. It will take time - perhaps a year or more - for the telecommunications industry, the FCC and others to fully implement the new 811 call-before-you-dig number across the United States. However, once fully implemented the designation of this new three-digit number by the FCC will better facilitate the call-before-you-dig process and benefit the national Dig Safely program.

For the one-call number in your area, dial 1-888-258-0808 in the United States. The one-call center will collect information about the location of your intended dig and then contact the companies in your area who operate underground facilities such as hazardous liquid and natural gas pipelines, telecommunications systems, electrical utilities, and sewer and water pipelines. Until the new 811 call-before-you-dig number is implemented, you must still call your state one-call center before digging.



KINDER MORGAN'S EMERGENCY PHONE NUMBER: SEE BACK OF BROCHURE



Pipelines In Your Community

There are millions of miles of pipeline systems in the United States. The pipelines are used to transport petroleum products that are necessary and used everyday in our households and businesses, such as gasoline and diesel for automobiles, jet fuel for air travel, home heating oil and petrochemical feedstock that are essential to our nation's economy and security. According to National Transportation Safety Board statistics, pipelines are the safest and most economical method of transporting products. Safe and reliable delivery of petroleum products is our primary concern.

Kinder Morgan is committed to the safe operation of its pipelines in your community. From our Control Centers we use state of the art technology to continuously monitor the operation of our pipelines 24 hours each day, seven days a week. Our pipelines are designed, installed, tested, operated and maintained in accordance with all applicable Federal and State requirements. Kinder Morgan maintains safe, compliant and efficient pipelines by routine inspections, corrosion protection, maintenance and testing programs, employee training, and public awareness. Public awareness includes educational meetings with excavating contractors, emergency response officials and other appropriate public officials and distribution of these informational brochures.

For additional public awareness information about our pipelines please visit: <http://publicawareness.kindermorgan.com>. Our website will provide you with the ability to request information and links to our pipeline awareness safety brochures and to other various pipeline safety websites such as: 1) Office of Pipeline Safety at ops.dot.gov and 2) www.pipeline101.com which is provided by the American Petroleum Institute (API) and the Association of Oil Pipe Lines (AOPL). Also, for a list of other pipeline operators in your area, please visit the National Pipeline Mapping System (NPMS) website at www.npms.rspa.dot.gov and follow the links provided.

KINDER MORGAN

500 Dallas Street, Suite 1000 • Houston, Texas 77002

For Non-Emergency or General Information

Para llamadas sin emergencia o para solicitar información general

<http://publicawareness.kindermorgan.com>

**Before You Dig, Contact Your State "One Call" Center
(typically 2 days in advance).**

**Antes de cavar, póngase en contacto al Centro de "Una Llamada"
de su estado (típicamente con dos días de anticipación).**

<u>State</u>	<u>Name of One Call</u>	<u>Phone #</u>
AZ	Arizona Blue Stake System, Inc.	800-782-5348
CA(N)	Underground Service Alert of Northern CA	800-642-2444
CA(S)	Underground Service Alert of Southern CA	800-422-4133
FL	Sunshine State One Call of Florida, Inc.	800-432-4770
IA	Underground Plant Location Service, Inc.	800-292-8989
IL	JULIE, Inc.	800-892-0123
IN	Indiana Underground Plant Protection Service	800-382-5544
KS	Kansas One Call System, Inc.	800-344-7233
LA	Louisiana One Call System, Inc.	800-272-3020
MO	Missouri One Call System, Inc.	800-344-7483
NE	Diggers Hot-Line of Nebraska	800-331-5666
NJ	New Jersey One Call	800-272-1000
NV	Underground Service Alert	800-227-2600
NM	New Mexico One Call System, Inc.	800-321-2537
OR	Oregon Utility Notification Center	800-332-2344
TX	Lone Star Notification Center	800-669-8344
TX	Texas One Call System	800-245-4545
TX	Dig TESS, Texas Excavation Safety System, Inc.	800-344-8377
WA	Northwest Utilities Notification Center	800-553-4344

KINDER MORGAN

500 Dallas Street, Suite 1000 • Houston, Texas 77002

For Non-Emergency or General Information

Para llamadas sin emergencia o para solicitar información general

<http://publicawareness.kindermorgan.com>

**Before You Dig, Contact Your State "One Call" Center
(typically 2 days in advance).**

**Antes de cavar, póngase en contacto al Centro de "Una Llamada"
de su estado (típicamente con dos días de anticipación).**

<u>State</u>	<u>Name of One Call</u>	<u>Phone #</u>
AZ	Arizona Blue Stake System, Inc.	800-782-5348
CA(N)	Underground Service Alert of Northern CA	800-642-2444
CA(S)	Underground Service Alert of Southern CA	800-422-4133
FL	Sunshine State One Call of Florida, Inc.	800-432-4770
IA	Underground Plant Location Service, Inc.	800-292-8989
IL	JULIE, Inc.	800-892-0123
IN	Indiana Underground Plant Protection Service	800-382-5544
KS	Kansas One Call System, Inc.	800-344-7233
LA	Louisiana One Call System, Inc.	800-272-3020
MO	Missouri One Call System, Inc.	800-344-7483
NE	Diggers Hot-Line of Nebraska	800-331-5666
NJ	New Jersey One Call	800-272-1000
NV	Underground Service Alert	800-227-2600
NM	New Mexico One Call System, Inc.	800-321-2537
OR	Oregon Utility Notification Center	800-332-2344
TX	Lone Star Notification Center	800-669-8344
TX	Texas One Call System	800-245-4545
TX	Dig TESS, Texas Excavation Safety System, Inc.	800-344-8377
WA	Northwest Utilities Notification Center	800-553-4344

Kinder Morgan Emergency Phone Number: (Call Collect) 213-624-9461

KINDER MORGAN
SFP, L.P.

Kevin Wallace
Line Rider

6565 NW St. Helens Rd.
Portland, OR 97210
kevin_wallace@kindermorgan.com

Office: 503-224-3390
Fax: 503-224-1448
Cell: 503-209-4572

PRSRT. STD.
U.S. POSTAGE
PAID
PERMIT NO. 4885
HOUSTON, TEXAS